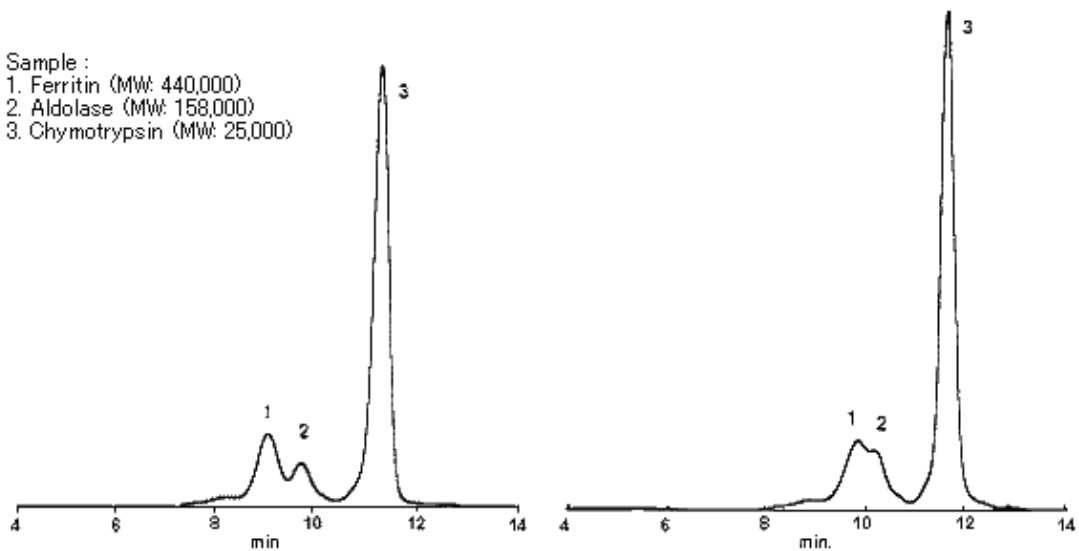


Sample :
1. Ferritin (MW: 440,000)
2. Aldolase (MW: 158,000)
3. Chymotrypsin (MW: 25,000)



Sample : 1. Ferritin (MW: 440,000), 2. Aldolase (MW: 158,000), 3. Chymotrypsin (MW: 25,000)

Columns : (left); Shodex PROTEIN KW-804 (8.0mmID*300mm), (right);
Company A column
Eluent : 50mM Sodium phosphate buffer(pH7.0) + 0.3M NaCl
Flow rate : 1.0mL/min
Detector : UV(220nm)
Column temp. : Room temp.